

Evaluation of an Adaptive Course of Procedural Programming

Michal Barla, Tomáš Kramár

Supervisor: Professor Mária Bielíková

S T U • •
• • • • •
F I I T •
• • • • •

cLIP

Adaptive learning system developed within PeWePro research project
Tracks students progress and selects study materials and questions accordingly
Uses IRT (Item Response Theory) to select questions

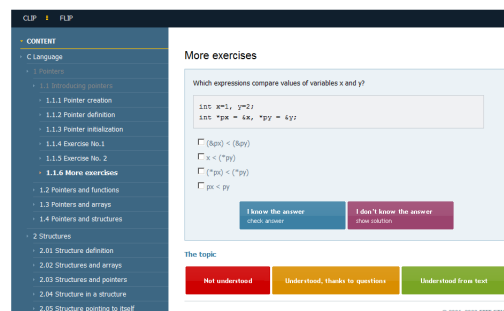
Experiment #1

Winter course of Procedural Programming
cLIP as complementary study source

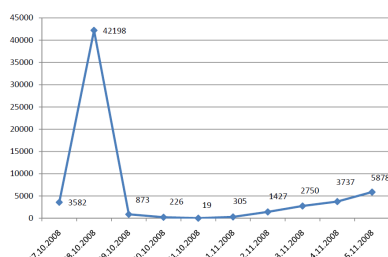
Available data

- pre-test
- cLIP logs
- post-test
- questionnaire

PEWEPRO



cLIP usage from 27.10.2008 to 5.11.2008



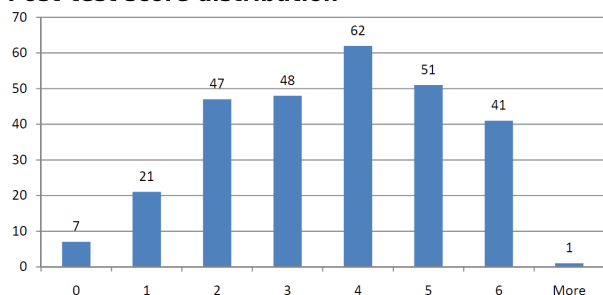
Did cLIP help you to understand the topic?

answer	% of students
I did not use cLIP	18,6
I only read texts (did not try the exercises)	8,6
Yes, it did	36,8
Yes, partially	34,2
No, it did not help at all	1,9

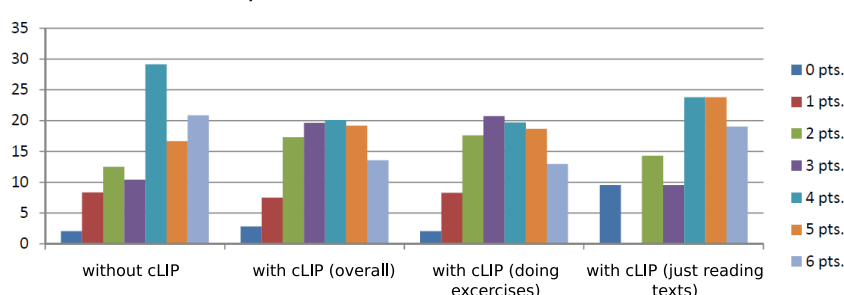
How did you learn?

source	% of students	most useful for % of students
lecture notes	64	30
cLIP	59	40
recommended sources	37	31
other sources	25	12

Post-test score distribution



Score distribution w/o cLIP



Experiment #2

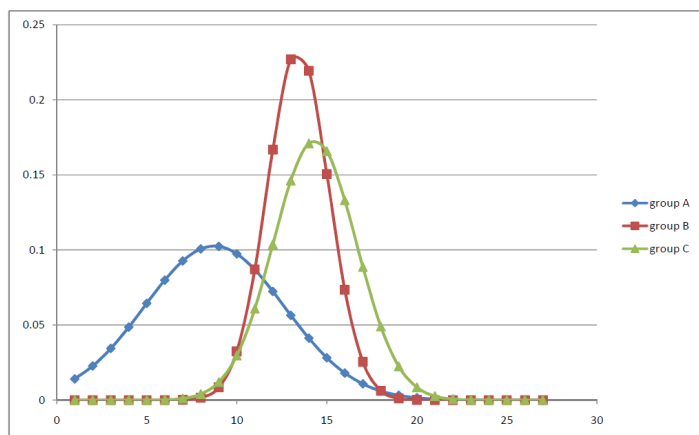
34 students in 3 groups

Group #a: cLIP without interactive content

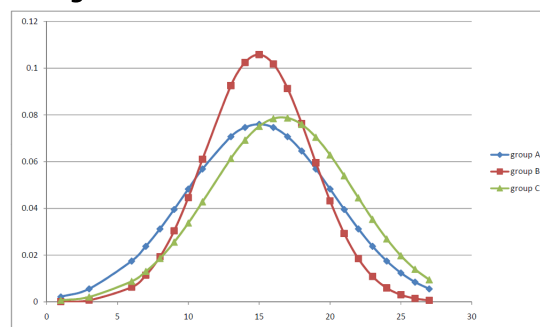
Group #b: cLIP without interactive content, with annotations

Group #c: full-featured cLIP

Histogram of students with lower weighted study average



Histogram of all students



Histogram of students with higher weighted study average

