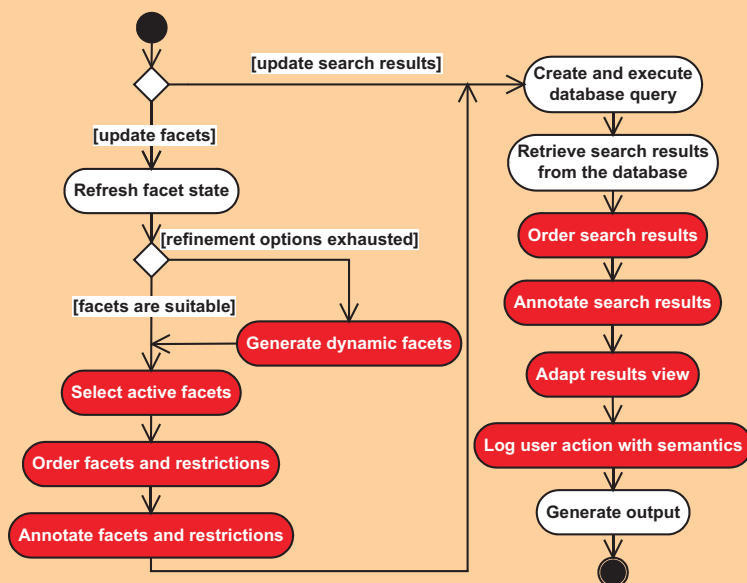


Facilitating exploratory search by combining multiple search paradigms

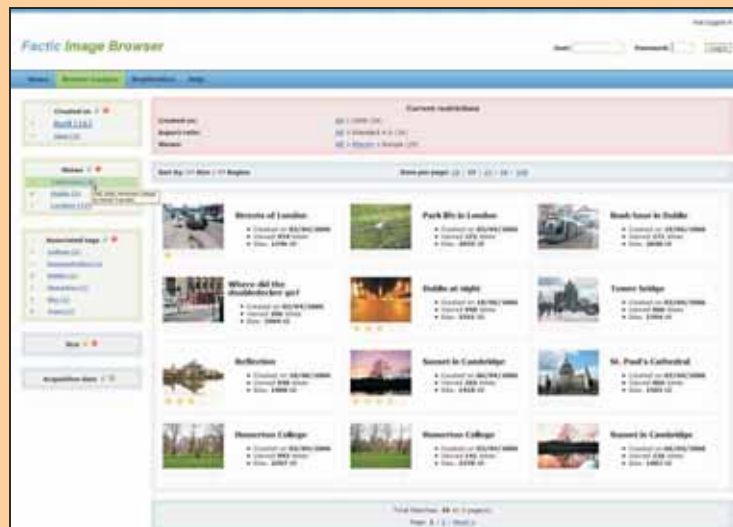
S T U . .
.
.
F I I T .
.
.

Michal Tvarožek

Supervisor: Professor Mária Bielíková

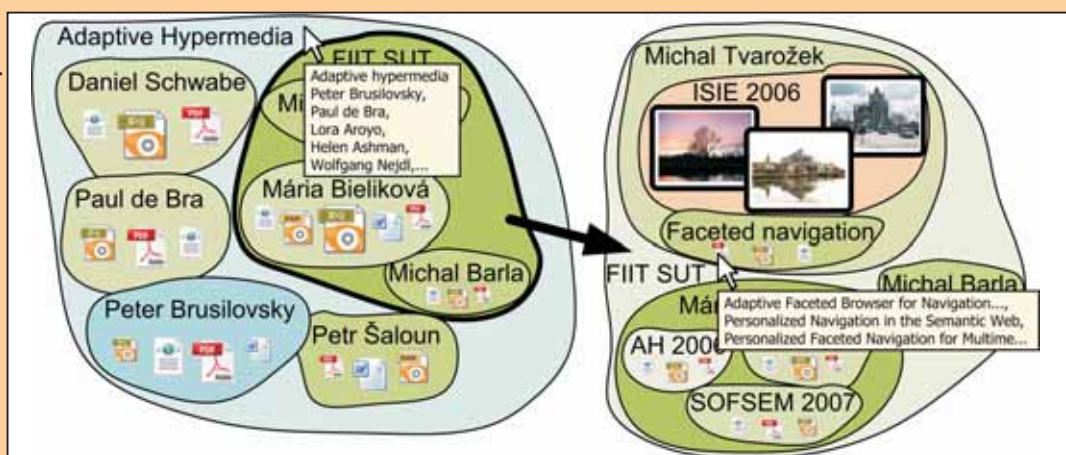


(1) Personalized Faceted Navigation

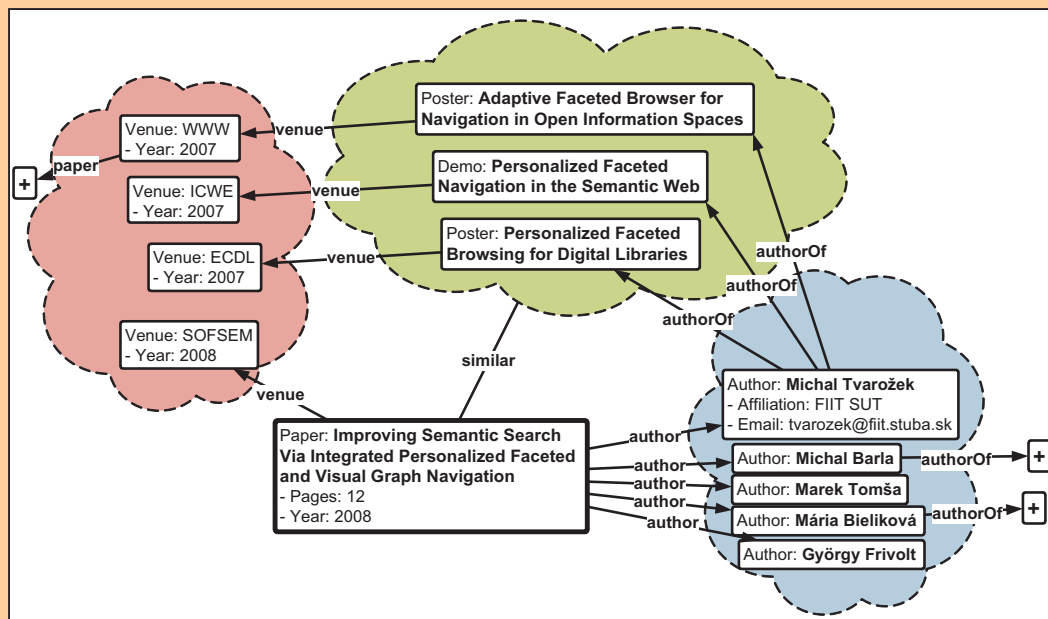


- Bottom-up hierarchical clustering and visualization
- Spring and gravity force based layouting of graphs (relation visualization)
- Cluster annotation (size, type, cluster complexity via labels, tooltips, font size, icons or shapes)
- Multiple instance type support (images, papers, ...)
- Personalization and social networks evaluation (node selection, background color)

(2) Vertical Visual Navigation in Hierarchical Clusters



(3) Horizontal Visual Navigation in Instance Details



Basic principles

- Long-term, short-term and in-session user characteristics
- Individual users, user groups and global statistics; user similarity and social networks
- Keyword-based search in instances, facets, restrictions
- View-based search for further query refinement
- Content-based search (QBE) by selecting positive samples
- Collaborative search via recommendation and annotation of instances, metadata navigation and user contribution